



AP 2-D Art and Design Portfolio

Janeva Buczynski

2021

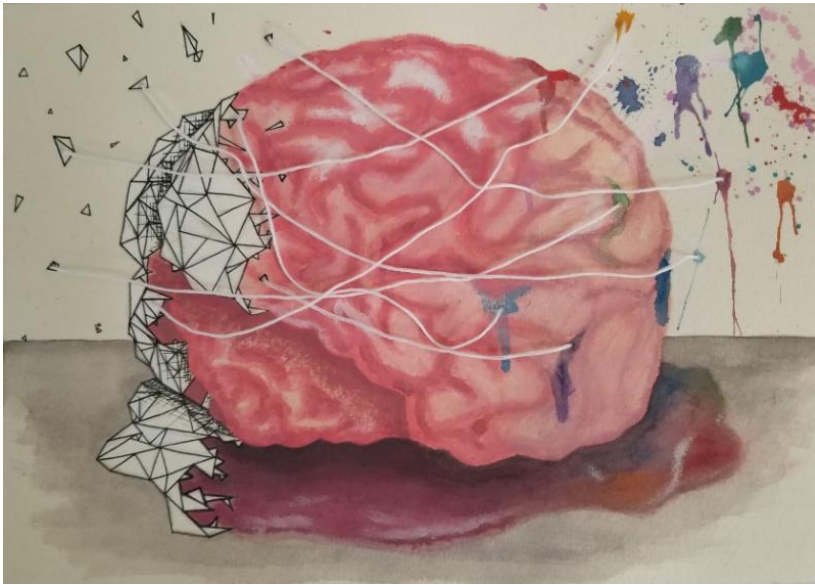


Image 1

Sustained Investigation

Height: 8 inches

Width: 12 inches

Material(s): Multimedia paper, ink, pan watercolor, acrylic paint, string, sewing needle

Process(es): Worked from left to right ink first, acrylic, then watercolor and threaded the string last

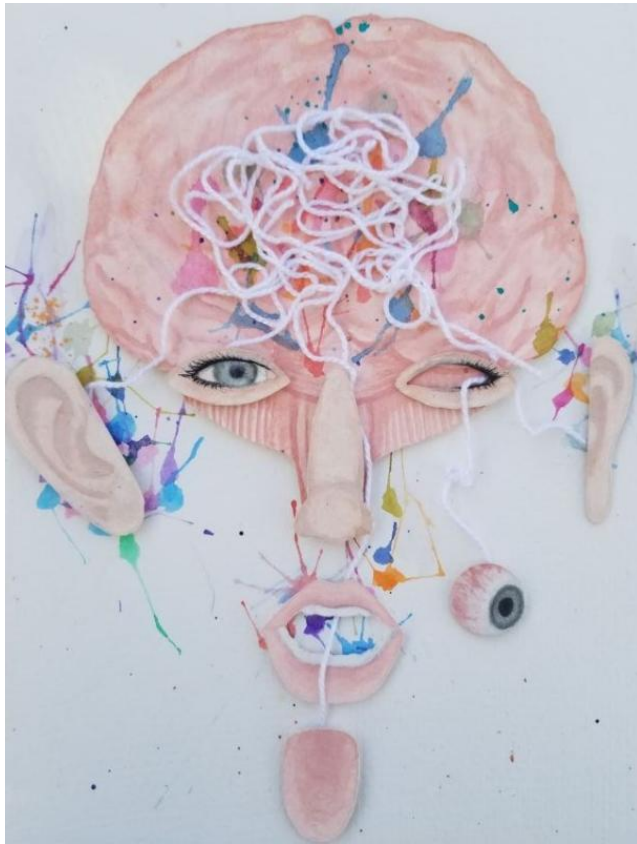


Image 2

Sustained Investigation

Height: 6 inches

Width: 4 inches

Material(s): Pan watercolor paint, multimedia paper, elmers glue, string, and an x-acto knife

Process(es): Features were painted, cut out, glued to cardboard, and then added to the main base, string glued



Image 3

Sustained Investigation

Height: 11 inches

Width: 14.5 inches

Material(s): Previous painting, multimedia paper, acrylic paint, watercolor paint, tracing paper, cardboard, glue

Process(es): Cont experimentation of stacking layers, used geometrics, color blocking, splattering, gluing string



Image 4

Sustained Investigation

Height: 9 inches

Width: 12 inches

Material(s): Multimedia paper, pan watercolor, cardboard, glue

Process(es): Experimented w layering for shadowbox effect, continued splattering, revised shadows behind figures

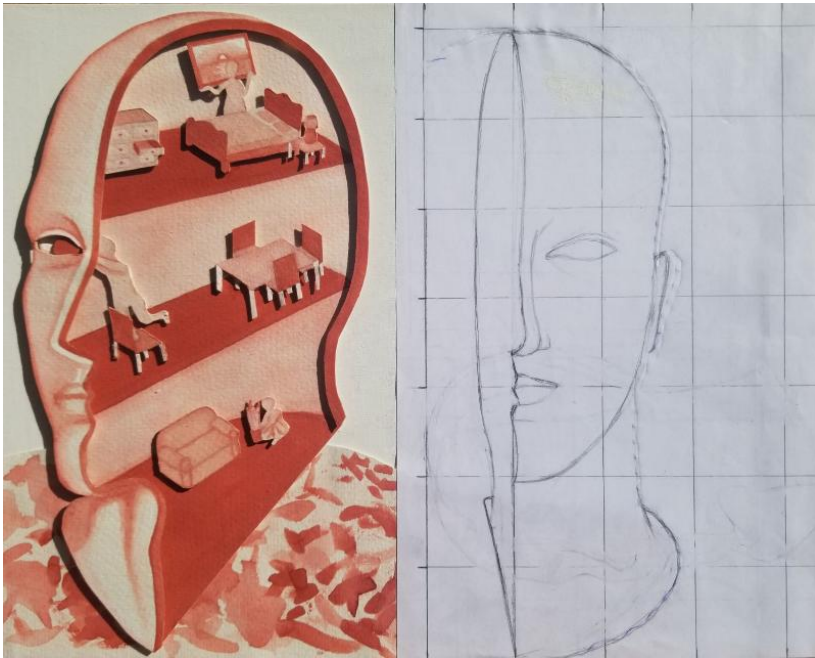


Image 5

Sustained Investigation

Height: 11 inches

Width: 14 inches

Material(s): Multimedia paper, pan watercolor, cardboard, glue

Process(es): Face/house and furniture made from cardboard, painted and glued paper over each detail



Image 6

Sustained Investigation

Height: 14 inches

Width: 11 inches

Material(s): Canvas board, acrylic paint, gel pen, watercolor, pages of a book, glue

Process(es): Experimented w collage w page of a book, continued use of geometric shapes, color, and splattering



Image 7

Sustained Investigation

Height: 11 inches

Width: 14 inches

Material(s): Canvas board, pan watercolors, tracing paper, spray adhesive, sharpie

Process(es): Experimented w linework on tracing paper and color blocking and continued splattering, revised faces

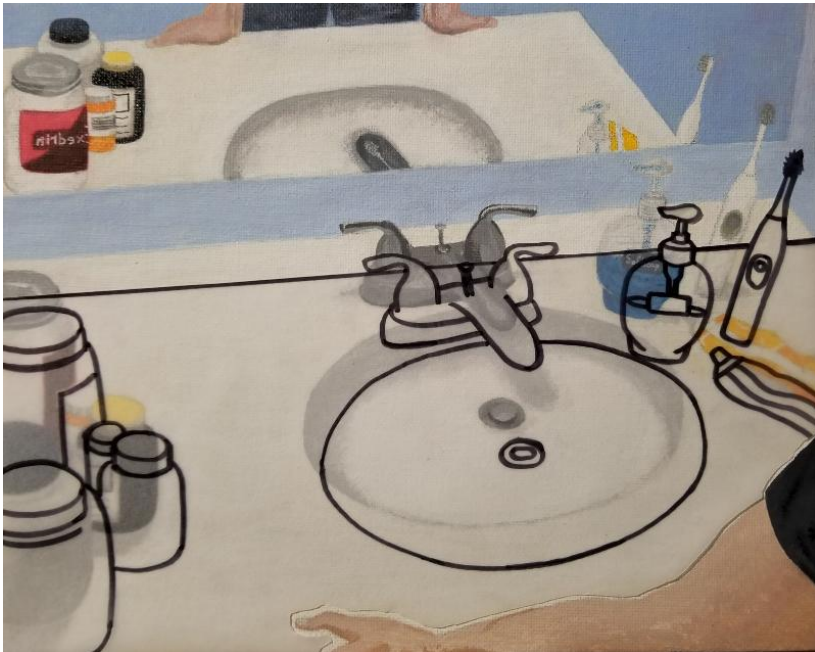


Image 8

Sustained Investigation

Height: 8 inches

Width: 10 inches

Material(s): Canvas board, acrylic paint, tracing paper, spray adhesive, sharpie

Process(es): Revised sketch, painted with acrylic, revised colors, continued gluing down tracing paper linework



Image 9

Sustained Investigation

Height: 6 inches

Width: 12.5 inches

Material(s): Canvas board, acrylic, white gel pen, cardboard, tracing paper

Process(es): Experimented with panels and experimented with using negative space, revised backgrounds

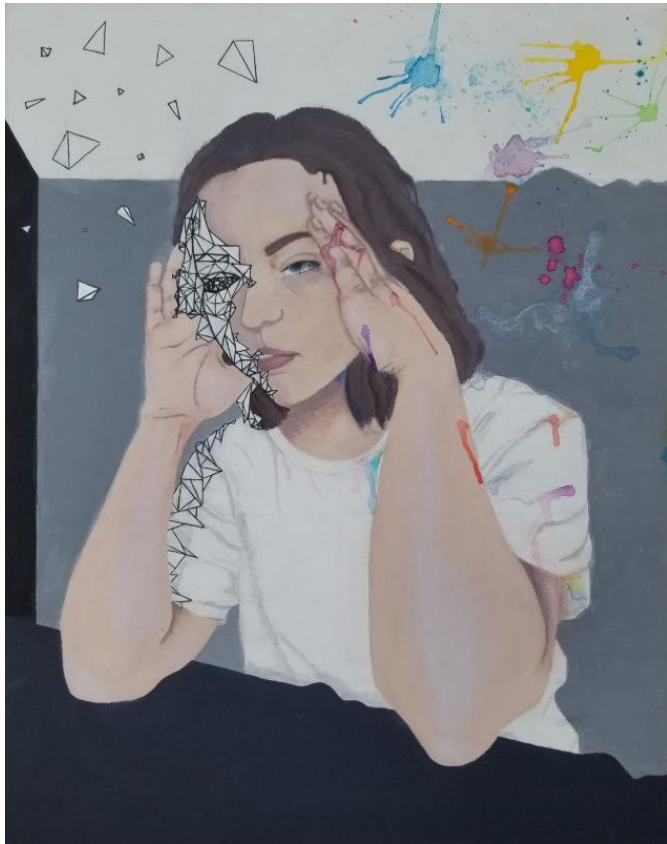


Image 10

Sustained Investigation

Height: 14 inches

Width: 11 inches

Material(s): Canvas board, acrylic, pan watercolor paint, ink

Process(es): Experimented w watercolor splatters on acrylic, transformed face w geometric shapes, revised skin



Image 11

Sustained Investigation

Height: 8 inches

Width: 10 inches

Material(s): Canvas board, acrylic paint, cardboard, white gel pen, tracing paper, glue

Process(es): Painted scene, blocked out some details with tracing paper, added figure and more tracing paper



Image 12

Sustained Investigation

Height: 4 inches

Width: 12 inches

Material(s): Multimedia paper, cardboard, acrylic paint, black gel pen, white gel pen, tracing paper

Process(es): Stacked concentric cardboard w/ circular cutouts for pupils then painted the rest and drew on lashes



Image 13

Sustained Investigation

Height: 7.5 inches

Width: 10 inches

Material(s): Multimedia paper, pages from a book, elmers glue, spray adhesive, watercolor

Process(es): Glued page scraps together for figure, glued whole page to base, experimented w dripping watercolor



Painted and revised shadows in watercolor on figures.

Experimented with liquid gold leaf to highlight the impact that the mind has on one's life.

Experimented with collage to convey mania in psychological disorders that result from traumatic brain injury.

Revised the background to be solid black with acrylic paint and continued experimentation with watercolor on collaged elements by painting the page.

Revised shadows of ribbon like strips on face.

FINAL PRODUCT

Image 14

Sustained Investigation

Height: 10 inches

Width: 8.5 inches

Material(s): Multimedia paper, pages from a book, spray adhesive, acrylic paint, watercolor, gold leafing

Process(es): Painted and cut out figure, revised shadows, glued collage elements to base and figure, added gold

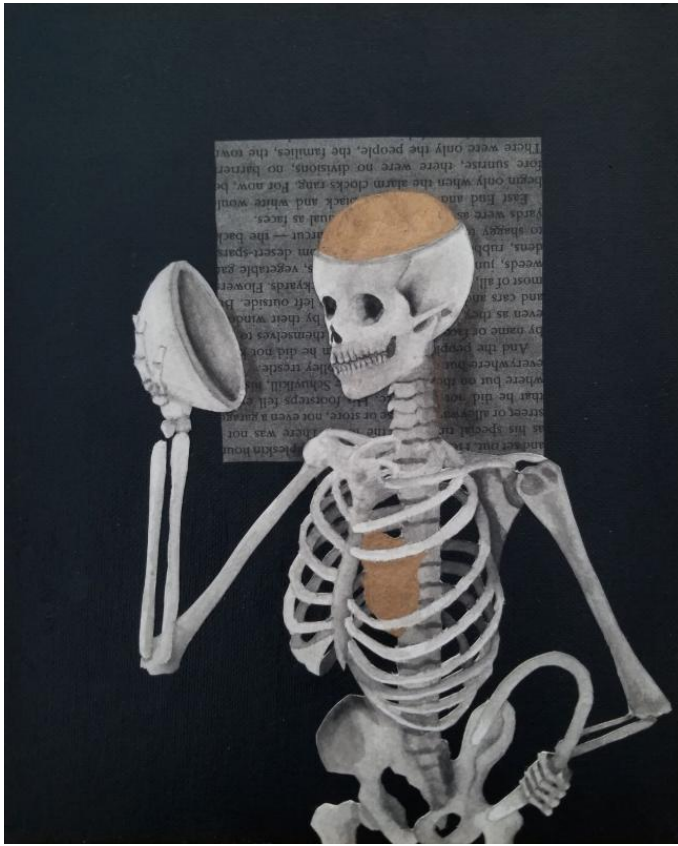


Image 15

Sustained Investigation

Height: 10 inches

Width: 8 inches

Material(s): Multimedia paper, watercolor, acrylic, spray adhesive, gold leafing

Process(es): Painted and cut out figure, revised shadows, continued gluing collaged elements and adding gold leaf

Written Evidence

Sustained Investigation

Identify the question(s) or inquiry that guided your sustained investigation.

Describe how your sustained investigation shows evidence of practice, experimentation, and revision guided by your question(s) or inquiry.

Response:

A traumatic brain injury changed my life. Experimented w splattering paint in 1 to show changes in the brain that affect thought & in 2 to show sensory overload. 3 is an actual piece from my art therapy w added features to show initial coping. 4 illustrates sleep problems & 5 shows identity reconstruction, experimented w depth by putting cardboard between layers & revised shadows. Continued using color & experimented w pattern & collage in 6 to show learning disability. 7 experimented w color blocking, layering linework & revised faces layout to exhibit sporadic emotions. 8 shifts to illustrate TBI experiences in a 1st person POV w distorted vision. 9 depicts blacking out. 10 illustrates feeling overwhelmed. 11 shows symptoms of memory loss & 12 is vision related issues, all of which cont. experimentation w tracing paper. 13, 14 & 15 cont. experimentation w collage using pages ripped from a book. These are done in black & white w gold leaf experimentation in 14 & 15 to show dull but important aspects of life w TBI. 13 conveys unfamiliarity w new sensations. 14 shows a manic episode. 15 illustrates accepting TBI because its irreversible but one can learn to adapt & live w an altered mind.



Work 1

Selected Works

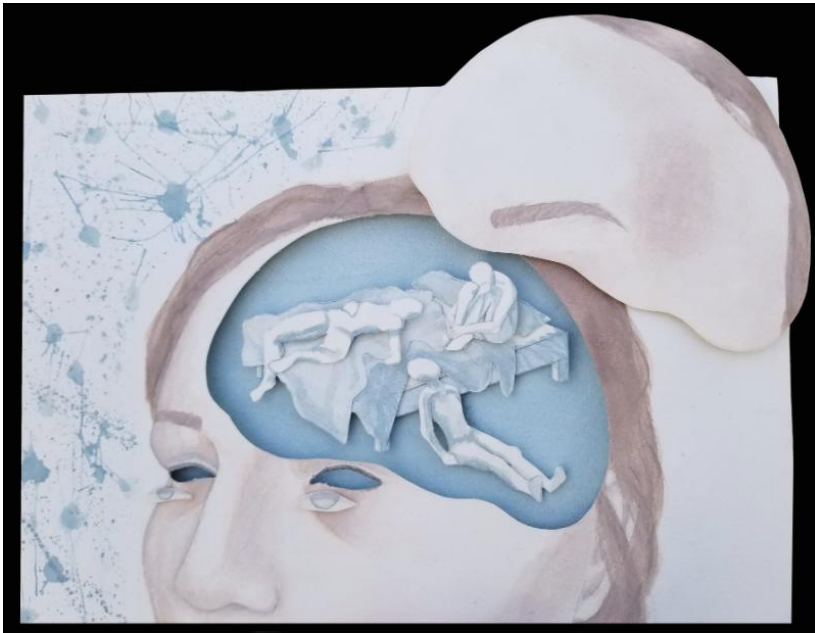
Height: 8 inches

Width: 10 inches

Idea(s): Delusion, desire, and delicacy involved in eating disorders, obsession w appearance eats away at you

Material(s): Acrylic paint on canvas board

Process(es): Sketched then transferred image to canvas, painted in acrylic and revised shadows by darkening them



Work 2

Selected Works

Height: 9 inches

Width: 12 inches

Idea(s): Insomnia, hyposomnia, and fatigue are the main sleep disturbances and disorders that result from TBI

Material(s): Multimedia paper, pan watercolor, cardboard, glue

Process(es): Painted, cut out figures, bed, eyes and forehead, glued together w cardboard between each feature



Work 3

Selected Works

Height: 11 inches

Width: 6.5 inches

Idea(s): Identity reconstruction often occurs after a TBI so this doll house is rearrangement of the mind

Material(s): Multimedia paper, pan watercolor, cardboard, glue

Process(es): Face/house and furniture made from cardboard, painted and glued paper over each detail



Work 4

Selected Works

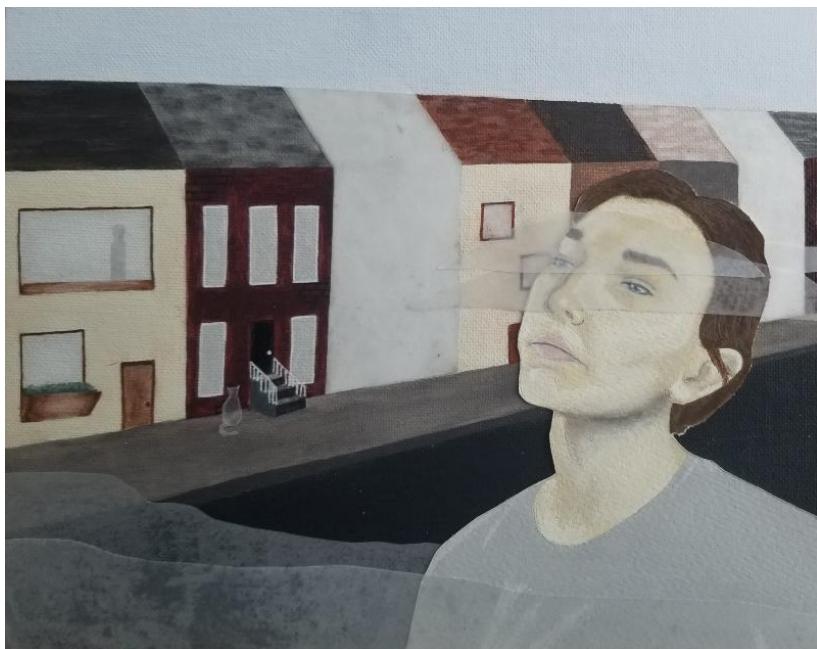
Height: 14 inches

Width: 11 inches

Idea(s): Confusion and difficulty reading and writing is another problem TBIs pose to ones ability to learn

Material(s): Canvas board, acrylic paint, gel pen, watercolor, pages of a book, glue

Process(es): Sketched and transferred to canvas, painted, drew lines, pasted book page, splattered watercolor



Work 5

Selected Works

Height: 8 inches

Width: 10 inches

Idea(s): Memory loss is a symptom of TBI, some elements are grayed out because the figure's memory is foggy

Material(s): Canvas board, acrylic paint, cardboard, white gel pen, tracing paper, glue

Process(es): Painted scene, blocked out some details with tracing paper, added figure and more tracing paper